

**TABLE 1: FOOD TOKENS**

| TOP PREDATORS                         |   | SECONDARY CONSUMERS<br>may be predators or prey |   | PRIMARY CONSUMERS<br>prey                        |    | PRODUCERS                                     |    |
|---------------------------------------|---|---|---|--|----|---|----|
| Person Fishing<br>token per student   | 1 | Yellow Perch<br>tokens per student              | 5 | Clam<br>tokens per student                       | 10 | Aquatic Plants (1 of 3)<br>tokens per student | 30 |
| Great Blue Heron<br>token per student | 1 | Small Fish<br>tokens per student                | 5 | Snail (1 of 2)<br>tokens per student             | 10 | Aquatic Plants (2 of 3)<br>tokens per student | 30 |
| Lake Trout<br>token per student       | 1 | Crayfish<br>tokens per student                  | 5 | Snail (2 of 2)<br>tokens per student             | 10 | Aquatic Plants (3 of 3)<br>tokens per student | 30 |
| TOTAL RED TOKENS                      |   | Frog<br>tokens per student                      |   | Macroinvertebrate (1 of 3)<br>tokens per student |    | TOTAL GREEN TOKENS                            |    |
|                                       |   | TOTAL BLUE TOKENS                               |   | Macroinvertebrate (2 of 3)<br>tokens per student |    |   |    |
|                                       |   |   |   | Macroinvertebrate (3 of 3)<br>tokens per student |    |   |    |
|                                       |   |   |   | TOTAL BROWN TOKENS                               |    |   |    |

TABLE 1: FOOD TOKENS

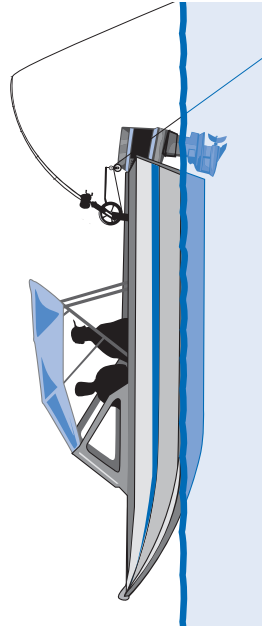
|            |            |            |            |            |            |            |            |            |            |            |            |
|------------|------------|------------|------------|------------|------------|------------|------------|------------|------------|------------|------------|
| FOOD TOKEN | FOOD TOKEN | FOOD TOKEN | FOOD TOKEN | FOOD TOKEN | FOOD TOKEN | FOOD TOKEN | FOOD TOKEN | FOOD TOKEN | FOOD TOKEN | FOOD TOKEN | FOOD TOKEN |
| FOOD TOKEN | FOOD TOKEN | FOOD TOKEN | FOOD TOKEN | FOOD TOKEN | FOOD TOKEN | FOOD TOKEN | FOOD TOKEN | FOOD TOKEN | FOOD TOKEN | FOOD TOKEN | FOOD TOKEN |
| FOOD TOKEN | FOOD TOKEN | FOOD TOKEN | FOOD TOKEN | FOOD TOKEN | FOOD TOKEN | FOOD TOKEN | FOOD TOKEN | FOOD TOKEN | FOOD TOKEN | FOOD TOKEN | FOOD TOKEN |
| FOOD TOKEN | FOOD TOKEN | FOOD TOKEN | FOOD TOKEN | FOOD TOKEN | FOOD TOKEN | FOOD TOKEN | FOOD TOKEN | FOOD TOKEN | FOOD TOKEN | FOOD TOKEN | FOOD TOKEN |
| FOOD TOKEN | FOOD TOKEN | FOOD TOKEN | FOOD TOKEN | FOOD TOKEN | FOOD TOKEN | FOOD TOKEN | FOOD TOKEN | FOOD TOKEN | FOOD TOKEN | FOOD TOKEN | FOOD TOKEN |
| FOOD TOKEN | FOOD TOKEN | FOOD TOKEN | FOOD TOKEN | FOOD TOKEN | FOOD TOKEN | FOOD TOKEN | FOOD TOKEN | FOOD TOKEN | FOOD TOKEN | FOOD TOKEN | FOOD TOKEN |
| FOOD TOKEN | FOOD TOKEN | FOOD TOKEN | FOOD TOKEN | FOOD TOKEN | FOOD TOKEN | FOOD TOKEN | FOOD TOKEN | FOOD TOKEN | FOOD TOKEN | FOOD TOKEN | FOOD TOKEN |
| FOOD TOKEN | FOOD TOKEN | FOOD TOKEN | FOOD TOKEN | FOOD TOKEN | FOOD TOKEN | FOOD TOKEN | FOOD TOKEN | FOOD TOKEN | FOOD TOKEN | FOOD TOKEN | FOOD TOKEN |
| FOOD TOKEN | FOOD TOKEN | FOOD TOKEN | FOOD TOKEN | FOOD TOKEN | FOOD TOKEN | FOOD TOKEN | FOOD TOKEN | FOOD TOKEN | FOOD TOKEN | FOOD TOKEN | FOOD TOKEN |
| FOOD TOKEN | FOOD TOKEN | FOOD TOKEN | FOOD TOKEN | FOOD TOKEN | FOOD TOKEN | FOOD TOKEN | FOOD TOKEN | FOOD TOKEN | FOOD TOKEN | FOOD TOKEN | FOOD TOKEN |

# FEEDING BEHAVIOR CARDS

## PERSON FISHING TOP PREDATOR

You walk forward casting a fishing line and tag prey by grasping it on the shoulder.

**You eat:** Anything



Brenner

## GREAT BLUE HERON TOP PREDATOR

You strut with your hands on your hips, so that your elbows are like wings. When you get near prey, your arms become a beak and are used to stab at prey.

**You eat:** Yellow perch, small fish, crayfish, frogs, macroinvertebrates, snails, clams

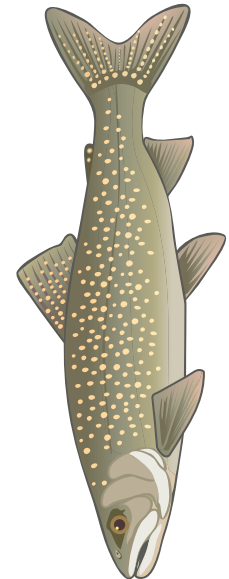


Brenner

## LAKE TROUT TOP PREDATOR

You walk around with arms held out like alligator jaws.

**You eat:** Macroinvertebrates, small fish and even small mammals



Brenner

FOLD

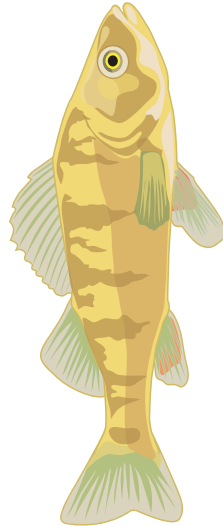
FOLD

# FEEDING BEHAVIOR CARDS

## **YELLOW PERCH** **SECONDARY CONSUMER**

You walk with your hands cupped around your mouth, opening and closing to grasp prey.

**You eat:** Macroinvertebrates and small fish



Brenner

## **FROG** **SECONDARY CONSUMER**

You catch food with your tongue. Snap your arm back and forth like a frog's tongue.

**You eat:** Macroinvertebrates, snails, crayfish, small fish

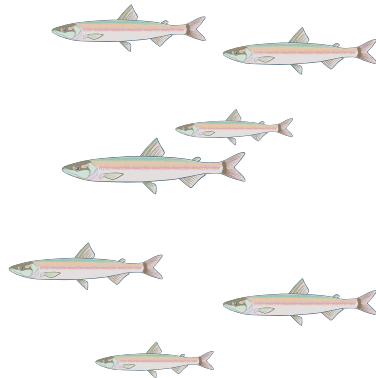


Marsee

## **SMALL FISH** **SECONDARY CONSUMER**

You feed mainly on algae, plant debris, and aquatic bugs. Pucker your lips and make sucking noises while feeding.

**You eat:** Macroinvertebrates, plants

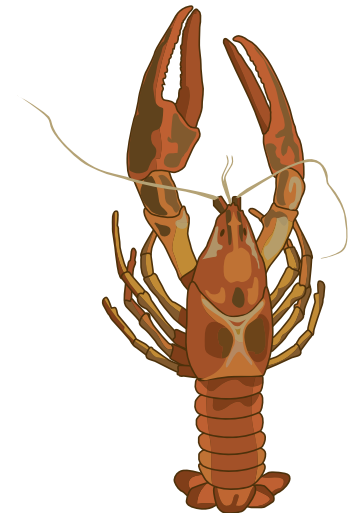


Brenner

## **CRAYFISH** **SECONDARY CONSUMER**

You capture prey and dead stuff with one or two claws. Make pinching motions using your hands like claws.

**You eat:** Small fish, snails, clams, macroinvertebrates, plants, animals or plants that have died



Brenner

FOLD

FOLD

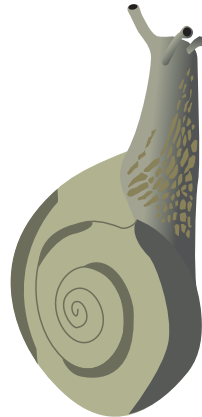
# FEEDING BEHAVIOR CARDS

## SNAIL

### PRIMARY CONSUMER (PREY)

You scrape plants, algae, or detritus (decaying stuff) with a special tongue. Show a licking motion using one hand as the tongue.

**You eat:** Live plants, animals or plants that have died



Marsee

## CLAM

### PRIMARY CONSUMER (PREY)

You filter tiny plants and detritus (decaying stuff) from the water. Wave your arms back and forth in the air like filters.

**You eat:** Live plants, animals or plants that have died



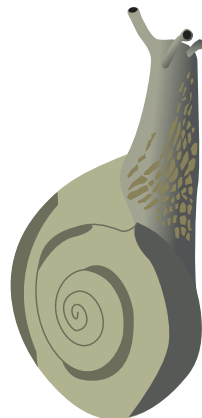
Brenner

## SNAIL

### PRIMARY CONSUMER (PREY)

You scrape plants, algae, or detritus (decaying stuff) with a special tongue. Show a licking motion using one hand as the tongue.

Live plants, animals or plants that have died



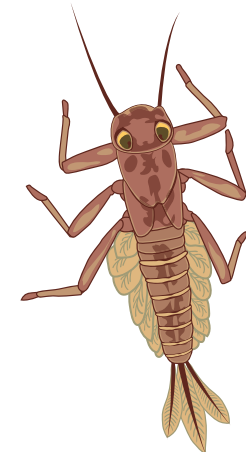
Marsee

## MACROINVERTEBRATES

### PRIMARY CONSUMER (PREY)

These are scavengers of plant and animal debris. Make swimming motions while you feed.

Live plants, animals or plants that have died



Brenner

FOLD

FOLD

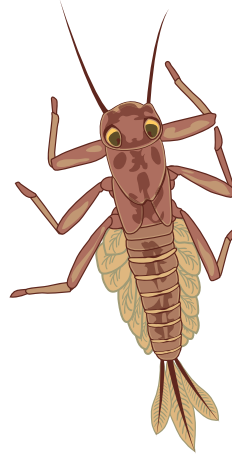
# FEEDING BEHAVIOR CARDS

## MACROINVERTEBRATES

### PRIMARY CONSUMER (PREY)

These are scavengers of plant and animal debris. Make swimming motions while you feed.

**You eat:** Live plants, animals or plants that have died



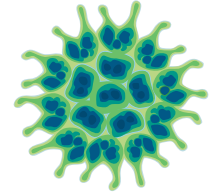
Brenner

## AQUATIC PLANTS

Producer

You use sunlight and nutrients from the water to grow. Stand in one place and wiggle your hands over your head like plants moving in water.

**You need:** Dead plants or animals for nutrients



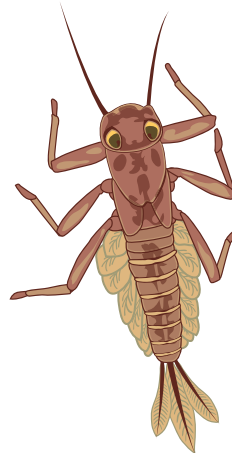
Brenner

## MACROINVERTEBRATES

### PRIMARY CONSUMER (PREY)

These are scavengers of plant and animal debris. Make swimming motions while you feed.

**You eat:** Live plants, animals or plants that have died



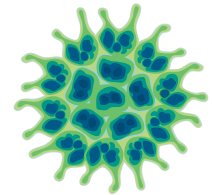
Brenner

## AQUATIC PLANTS

Producer

You use sunlight and nutrients from the water to grow. Stand in one place and wiggle your hands over your head like plants moving in water.

Dead plants or animals for nutrients



Brenner

FOLD

FOLD

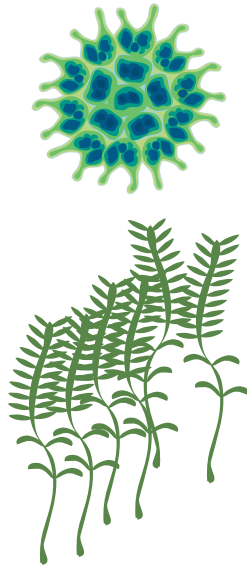
# FEEDING BEHAVIOR CARDS

## AQUATIC PLANTS

Producer

You use sunlight and nutrients from the water to grow. Stand in one place and wiggle your hands over your head like plants moving in water.

**You need:** Dead plants or animals for nutrients



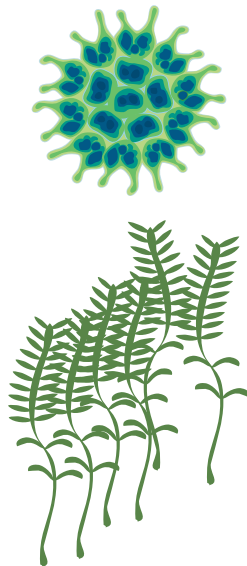
Brenner

## AQUATIC PLANTS

Producer

You use sunlight and nutrients from the water to grow. Stand in one place and wiggle your hands over your head like plants moving in water.

**You need:** Dead plants or animals for nutrients



Brenner

FOLD

FOLD