



Twin Cities Sustainable Harbor Strategy



Project Goal

The goal of the Twin Cities Sustainable Harbors Initiative is to facilitate the development of long-term, sustainable strategies that enable Michigan's Great Lakes coastal communities to maximize the benefits of their harbors and waterfront.

Project Study Area



Engagement Strategy

- Presentations
- Facebook (@TwinCitiesHarborVC)
- Webpage
- Focus Groups
- Technical Meetings (Parks & Rec Commissions, Planning Commissions, DDA/Chamber of Commerce)
- Design Charrette
- Harbor Governance Meetings

Focus Groups - Invited

- Neighborhood Associations
 - Edgewater Neighborhood, Arts District, Island Pointe Condo, Below the Bluff, Eagle Pointe Condo, Eagle Pointe Neighborhood, Tailwinds Condo, Channel Bluff Condo
- Commercial/Recreational Harbor Interests
 - Dock 63, Central Dock, Pier 33, Harbor Shores, St. Joseph River Yacht Club, Whirlpool, Lafarge, Pier 1000, Eagle Point Marina, West Basin Marina, Anchor's Way, LECO, St. Joseph Sailing School, Scooter Joe's
- Environmental Groups
 - Audubon Society, Two Rivers Coalition, The Nature Conservancy, SW MI Steelheaders, Trout Unlimited, Berrien County Conservation District, Friends of Jean Klock Park, SW Michigan Land Conservancy, Sierra Club, Friends of St Joe River
- Faith Based Community
- Youth & Young Professionals

Charrette



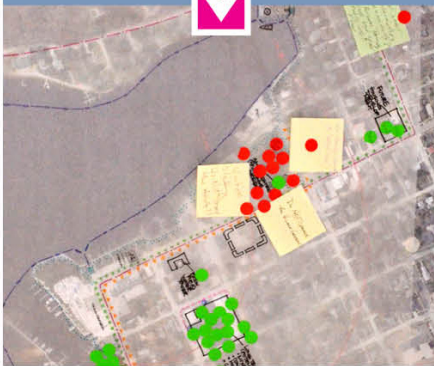
THREE VISITS TO THE COMMUNITY



September 19

INITIAL VISIONING MEETING 1 DAY

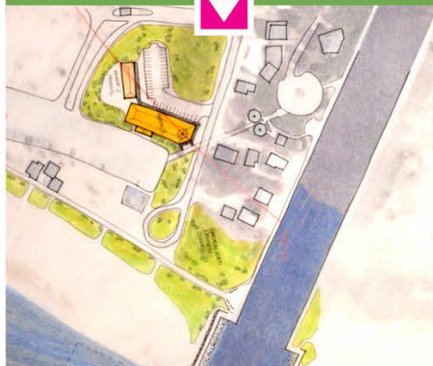
- a. Assets
- b. Weaknesses
- c. Barriers
- d. Connections



October 9 - 11

DESIGN CHARRETTE 3 DAYS

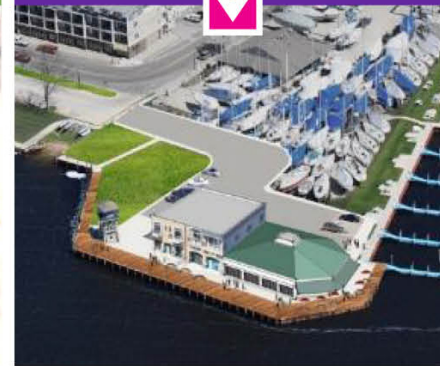
- a. Public Input Workshop
- b. Open House: Selecting A Preferred Option
- c. Public "Work in Progress" Session



TBD

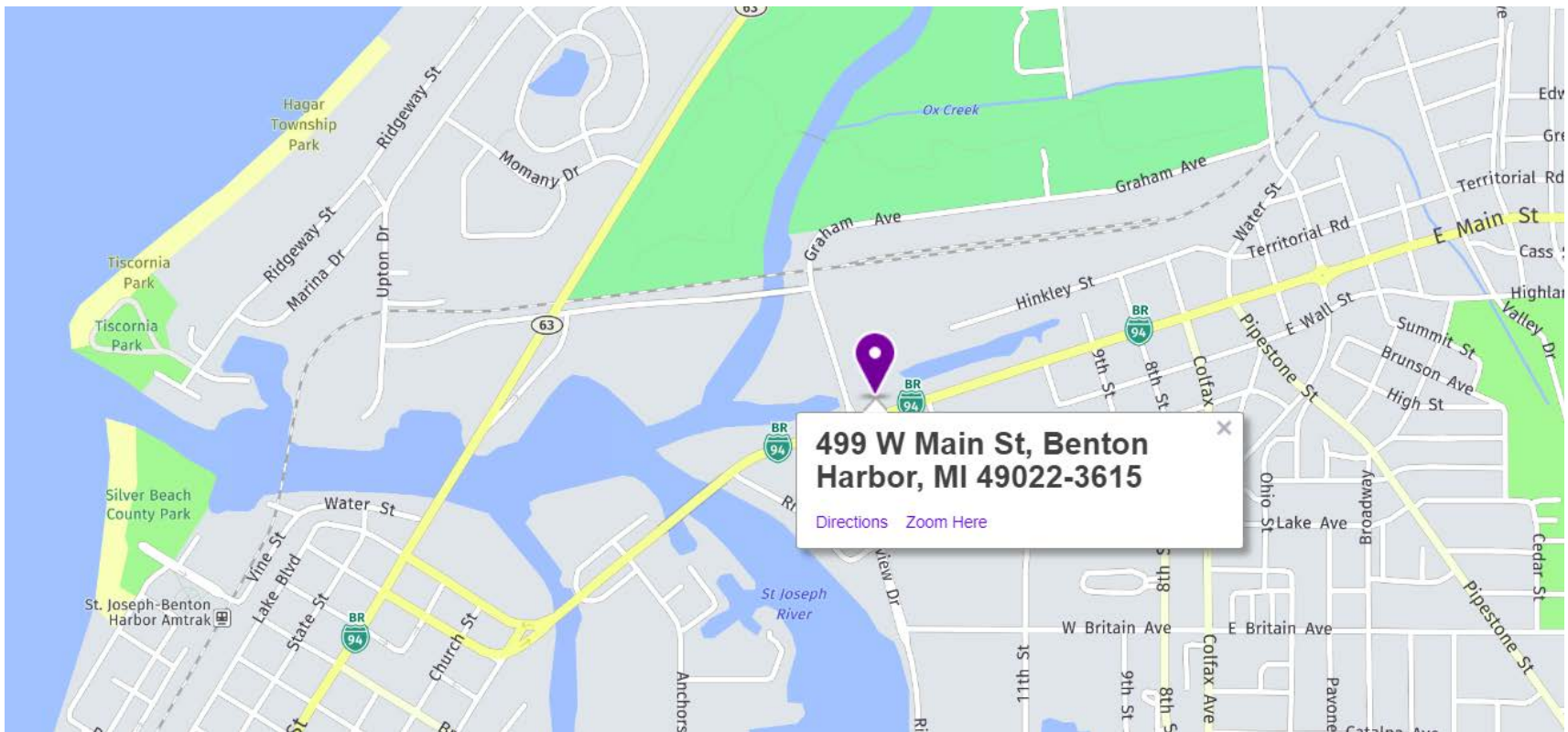
FINAL PRESENTATION 1 DAY

- Presentation to City/
Village Council
- a. Updated graphics
 - b. Final Report



Iterative process balancing community input and expert design work.

Public Meeting Location - Kinexus



Guiding Principals

1. To honor and celebrate the essence of Benton Harbor and St. Joseph, both in their distinct and shared identities.
2. To study the existing working harbor and conceptual changes to its location, operations, and site design.
3. *To study how the harbor area can support viable commercial shipping and recreational boating in the future.*
4. *To study how the harbor area can shape an attractive gateway to the cities of Benton Harbor and St. Joseph.*
5. *To study how the harbor can be embraced by both the community and tourism, including water and trail users.*
6. To study how the harbor can support increased real estate values for residential property in and around the area.
7. To study how the harbor can be an aesthetic asset to Benton Harbor and St. Joseph.
8. *To study how the harbor can help to support human and environmental health.*
9. *To study development concepts that are economically sustainable.*

Questions?

Donald Carpenter (Project Manager)

248-763-4099 or dcarpenter@drummondcarpenter.com

Mrs. Emily Finnell (Director of Special Projects and Strategy, OGL)

517-284-5036 or FinnellE@michigan.gov