



# Sustainable Small Harbor Management Strategy Project

*Community Introduction Meeting  
Oct 10, 2019  
Arcadia, Michigan*



Michigan Sea Grant helps to foster economic growth and protect Michigan's coastal, Great Lakes resources through research, education and outreach.



MICHIGAN STATE  
UNIVERSITY



Lawrence  
Technological  
University

# Core Question

What are the key barriers to small harbor economic, social and environmental sustainability and what tools would help small harbor managers create more stability?





# VISITOR ATTRACTIONS

1

## ACCESSIBLE

- Visual and physical public access to harbor, waterfront, parks
- Boat access for fishing, tours, safe harbor for boats small and large
- Harbor kept dredged

2

## CONNECTED

- Walking, biking, car, boat, transit
- Public internet
- Linked to downtown
- Available parking

3

## DIVERSE

- Working waterfront for commerce, industry, recreation
- Services, rentals, sales
- Physically and economically resilient

4

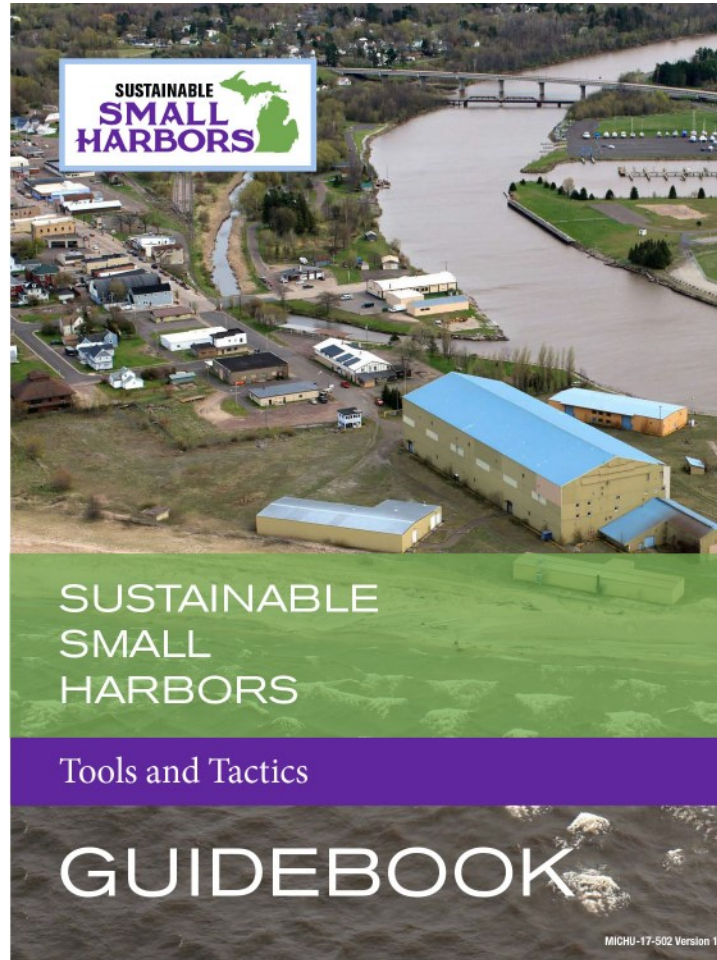
## WELCOMING

- Food, beverage, lodging
- Retail and entertainment
- Safe, clean, well-lit





# Sustainable Harbor Toolkit



<https://www.michiganseagrant.org/topics/resilient-coastal-communities/sustainable-small-harbors/tools-and-tactics-guidebook/>

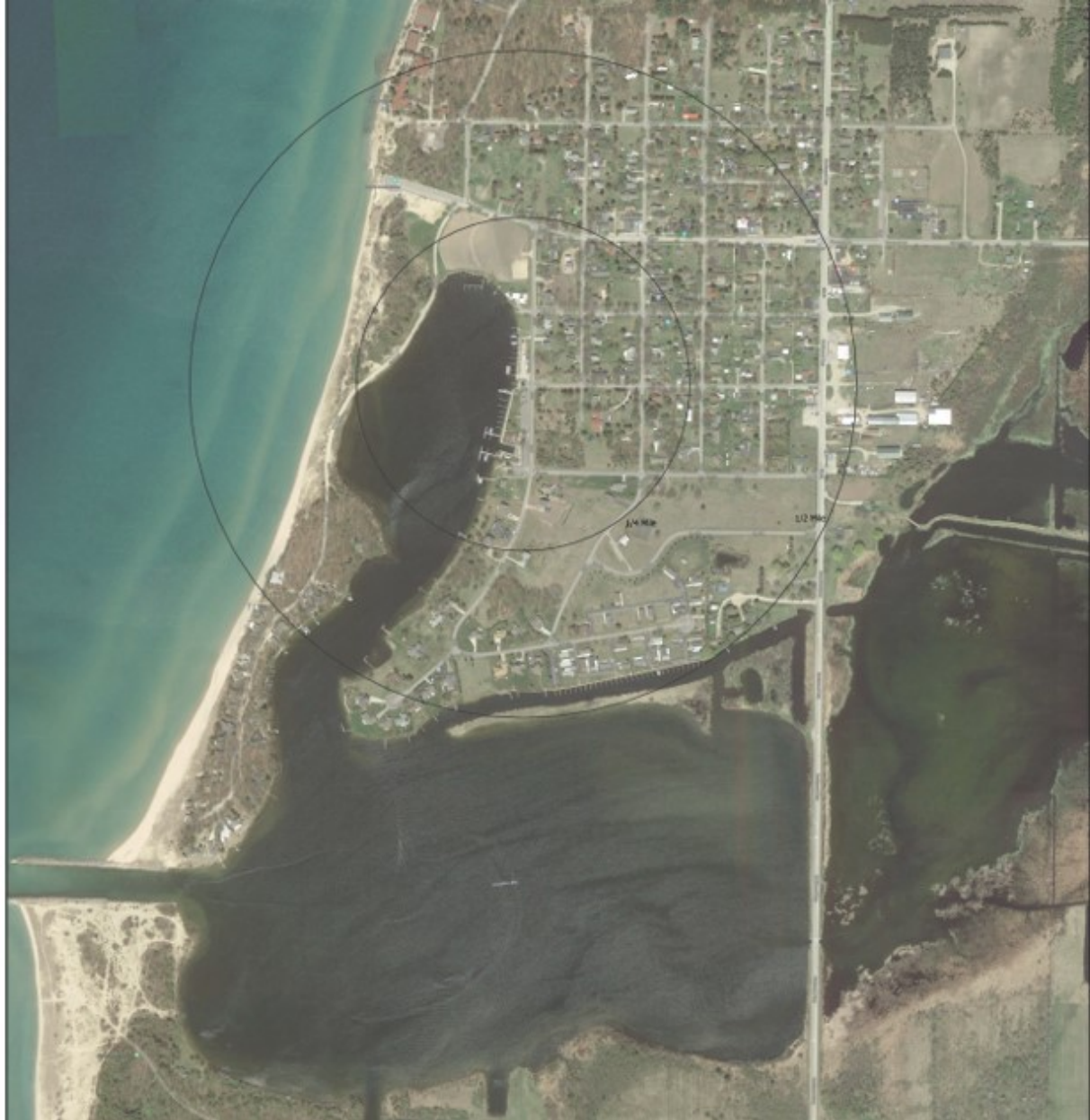
# Charrette Team

- Leadership Team Representatives
  - Mark Breederland, MSU Extension
  - Don Carpenter, Drummond Carpenter
- Design/Facilitation Team
  - Constance Bodurow, studio[Ci] (Design Lead)
  - Rachel Pieschek, Drummond Carpenter
  - Abby Lane, Drummond Carpenter
  - Todd Marsee, Michigan Sea Grant
  - Scott Lee, LakeStreet Architecture
  - Kurt Schindler, Northwest Rural Planning



# Arcadia Background

# Arcadia Study Area

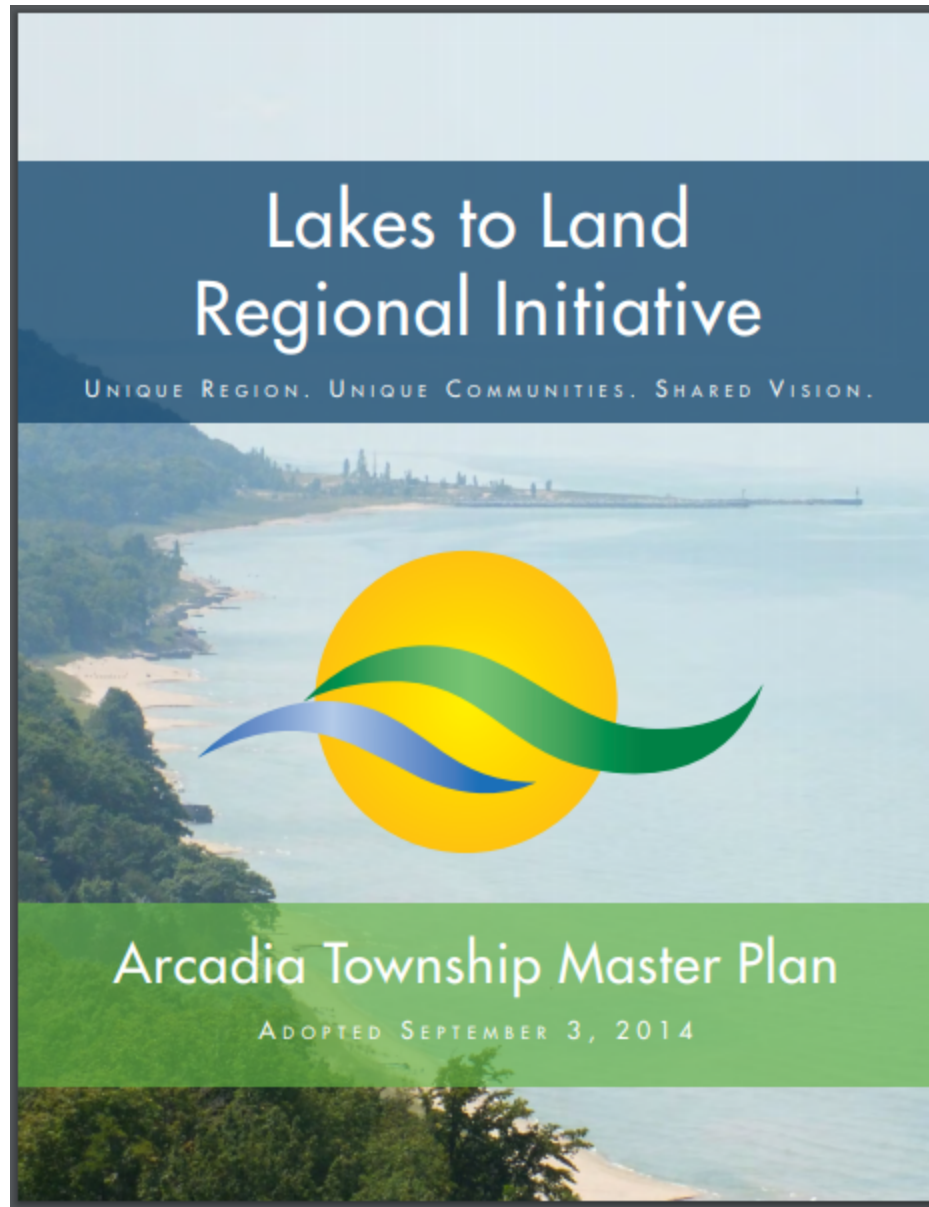




# Arcadia Study Area



# Arcadia Township Master Plan (2014)





# 2014 Visioning – One Word to Describe Arcadia Township



# 2014 Visioning – Done Well

## Describe Arcadia Township





# 2014 Visioning – Could Do Better Describe Arcadia Township



# ARCADIA, WHERE LIFE MEETS WATER



The goal of partners is to make Arcadia a world class destination by creating a network of recreational opportunities that provide access for people of all needs and abilities to recreate and enjoy Arcadia's truly unique natural resources: the dunes, Lake Michigan shoreline, marsh, wetlands, inland lakes and tributaries, and existing amenities, such as the municipal marina and private tourism-based businesses.

## 1 ARCADIA BEACH SUNSET STATION



A current Explore the Shores site, continued improvements at the Arcadia Beach/Sunset Station will improve beach and viewing access, and provide universal access. Additional improvements to the restrooms and playground areas will further enhance this pristine public recreation area.

## 2 PROPOSED NON-MOTORIZED PATHWAY



Arcadia's recreation and business amenities would be easily reached via a proposed non-motorized pathway. Multi-use trail systems are found at nearby public lands and provide another reason to visit or live in Arcadia.



## 3 GREBE PARK VETERANS MEMORIAL MARINA

Previous investments in Grebe Park/Veterans Memorial Marina make it a natural fit as an Explore the Shores site. Additional planned improvements include a universally accessible canoe/kayak launch, fish cleaning station, permanent concrete visit bathroom facilities, improvements to handrails on the fishing pier and sidewalks.



## 4 PLEASANT VALLEY COMMUNITY CENTER

A portion of the Center will be converted into an "unmanned" welcome station to the system of Arcadia Explore the Shores locations. Maps, information about recreational uses and opportunities, educational and historical information about the sites and Arcadia will be available at the Center, making it a great jumping off point for the integrated system of Arcadia Explore the Shores sites.



## 6 ARCADIA DUNES: THE C.S. MOTT NATURE PRESERVE



An Explore the Shores universally accessible path will take visitors to coastal views at the Grand Traverse Regional Land Conservancy's preserve. Additional infrastructure improvements include educational and interpretive signs and benches. This will be one of the first such trails incorporating universal design within a Great Lakes dune complex.

## 5 ARCADIA MARSH NATURE PRESERVE



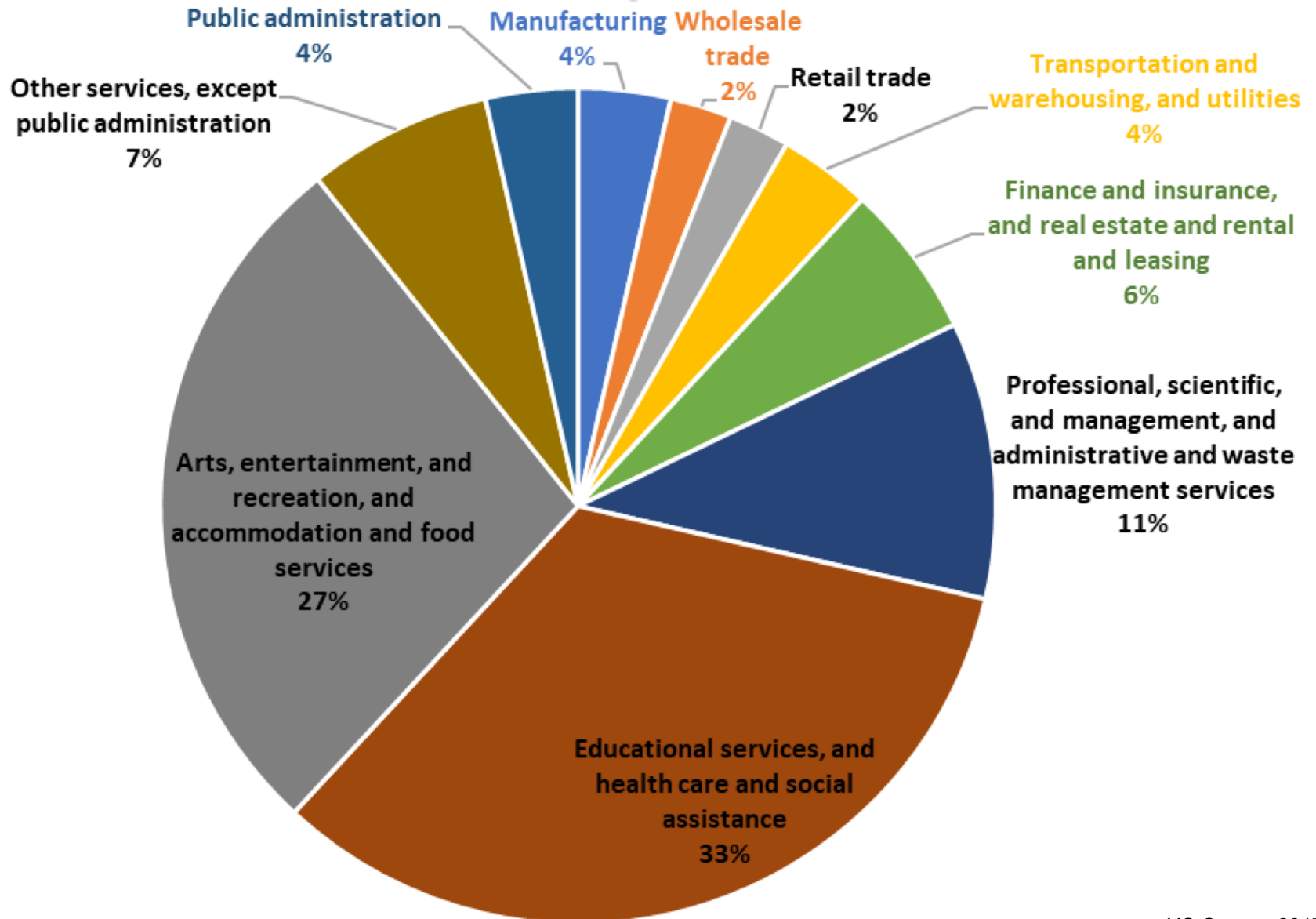
Another of the Grand Traverse Regional Land Conservancy Preserve's, Arcadia Marsh is a potential future Explore the Shores project site. Discussions are currently underway to develop access to provide opportunities for people of all ages, needs and abilities to birdwatch, fish, explore and learn about the Marsh.

# Population

	2000	2010	2017	Percent Change from 2000-2010	Percent Change from 2010-2017
<b>Arcadia Township</b>	621	639	629	3%	-2%
<b>Manistee County</b>	24,601	24,590	24,427	0%	-1%
<b>Michigan</b>	9,918,000	9,931,000	9,976,000	0%	0%
Collected from U.S. Census Data 1990, 2000, 2010, 2017					



# Occupation



# Marina Information



- Arcadia Campground Marina
  - Closed
- Arcadia Marine (Private)
  - 21 slips
  - hoist
- Public Boat Launch
  - 2 lanes
- Arcadia Veteran's Memorial Marina
  - (17) Seasonal Slips
  - (17) Transient Slips
  - Maximum size 100 ft boat length
  - Gas
  - Short-term Use Dock (Members & Transients)





# Hands On Workshop

- Introduction (5 minutes)
  - Name, Live, and Background/Interest
- Assets, Weaknesses, Barriers, & Connections Exercise (40 minutes)
- Vision Exercise (Arcadia 2040) (40 minutes)

**Talk with your pen!**

# Exercise 1: Community Mapping

# Exercise 1

- Assets (green)
  - Weaknesses (yellow)
  - Barriers (pink/purple)
  - Connections (blue)
- 
- ~10 minutes per topic
  - 2 minutes to record your ideas (one per post-it note)
  - 5 minutes to share around the room
  - Top 3 Assets



# Exercise 1

- **Assets (green)** – What brings boaters, businesses, residents, and visitors to Arcadia?
- **Weaknesses (yellow)** – What is holding Arcadia back from being the destination it wants to be?
- **Barriers (pink/purple)** – What are the barriers to having a sustainable community, harbor and waterfront?
- **Connections (blue)** – What are the connections between downtown, local trails/attractions, the marina, and the waterfront?

# Exercise 2: Vision Elements

# Vision for the Future

Picture Arcadia in 20 years!

What is special about your walk around town?

If you are floating over the community in a hot air balloon (drone), what are the bold enhancements?



# Vision for the Future

Picture Arcadia in 20 years!

- 5 minutes to record your ideas (one per post-it note)
- 10 minutes to locate on map
- 15 minutes of consensus building (drawing)
- Presentation boards (2 minutes per table)

# Vision for the Future

Picture Arcadia in 20 years!

Come back on Saturday from 11 am – 1pm  
to see the future and share your thoughts!