

TWIN CITIES SUSTAINABLE HARBOR PROJECT

TWIN CITIES HARBOR VISION 2040

St. Joseph & Benton Harbor, MI



PROJECT OVERVIEW

GOALS

- 1) Initiate revitalization of the harbor and adjacent waterfront through community collaboration.
- 2) Develop and implement long term strategies that maximize the benefits of the harbor and the waterfront for the surrounding communities.

TEAM

The Project Team includes the Office of the Great Lakes, Michigan Sea Grant and MSU Extension and Dr. Don Carpenter

FUNDING

Funding for the Twin Cities Sustainable Harbor Project is provided by the Department of Environment, GL and Energy through the Michigan Great Lakes Protection Fund.

BACKGROUND

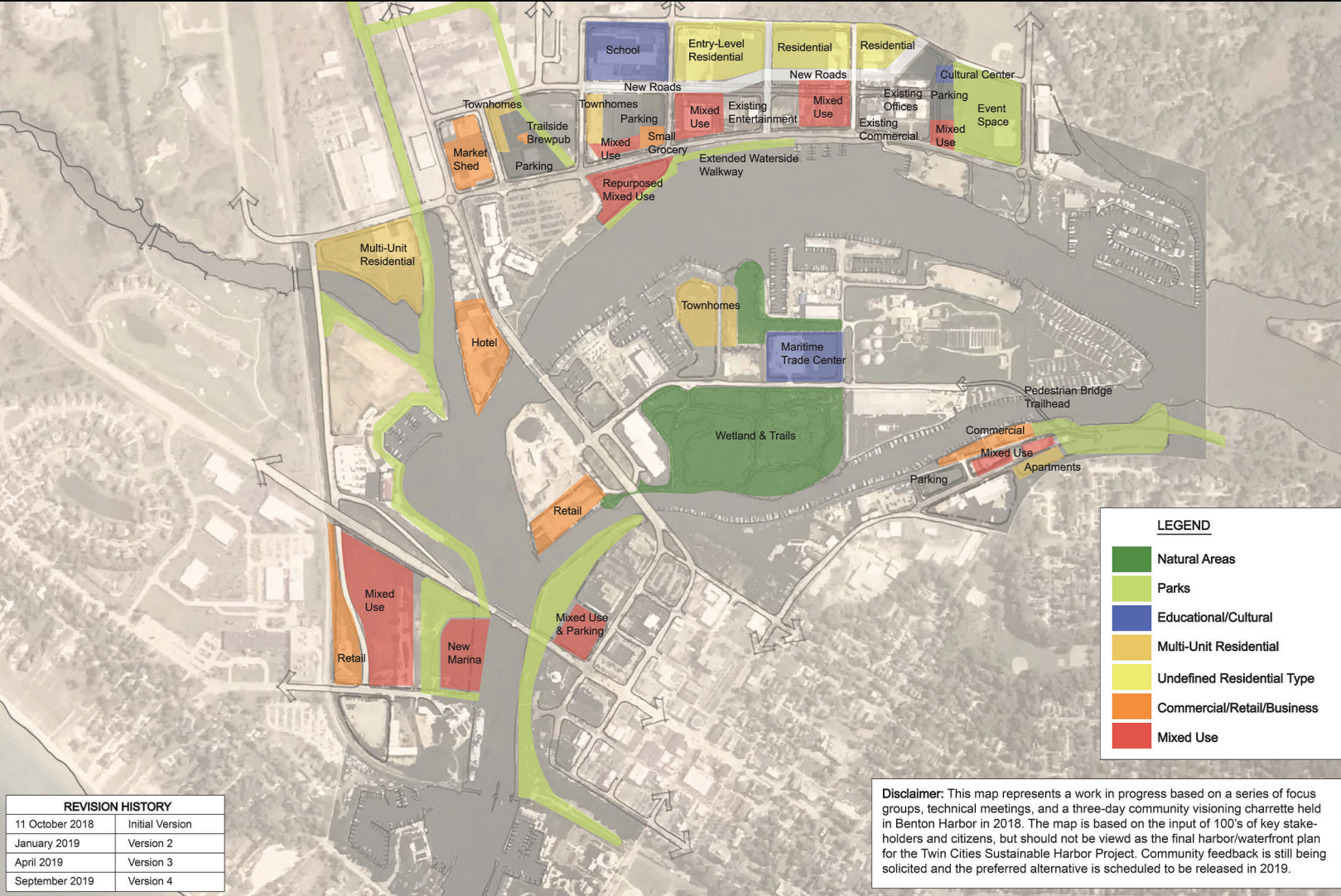
The project began in June 2018 with the development of an engagement strategy that was co-created by community members and the project team. This strategy included community tours of the waterfront, presentations to commissions and boards, a communication strategy, focus groups of stakeholders identified by the communities as important to engage in the process, technical meetings with planning commissinors, DDAs, business owners, and importantly a community visioning charette. Through the public, community input and visioning charettes that followed, the Twin Cities Harbor Vision 2040 was co-created and refined. The following is a summary of the public input received from over 100 participants during the two October 15, 2019 public input charettes.



TWIN CITIES SUSTAINABLE HARBOR PROJECT

TWIN CITIES HARBOR VISION 2040

St. Joseph & Benton Harbor, MI



INSTRUCTIONS

On October 15, 2019 two public input sessions were held for the Twin Cities Sustainable Harbor Project “Twin Cities Harbor Vision 2040” (*pictured above*). During these sessions, facilitators sought public input on the design and attributes of the Twin Cities Harbor Vision 2040 by asking the following targeted questions:

What would you be most excited about if it were a reality? What would you be most likely to use or visit?

What elements make you uncomfortable? What would you avoid if it was a reality?

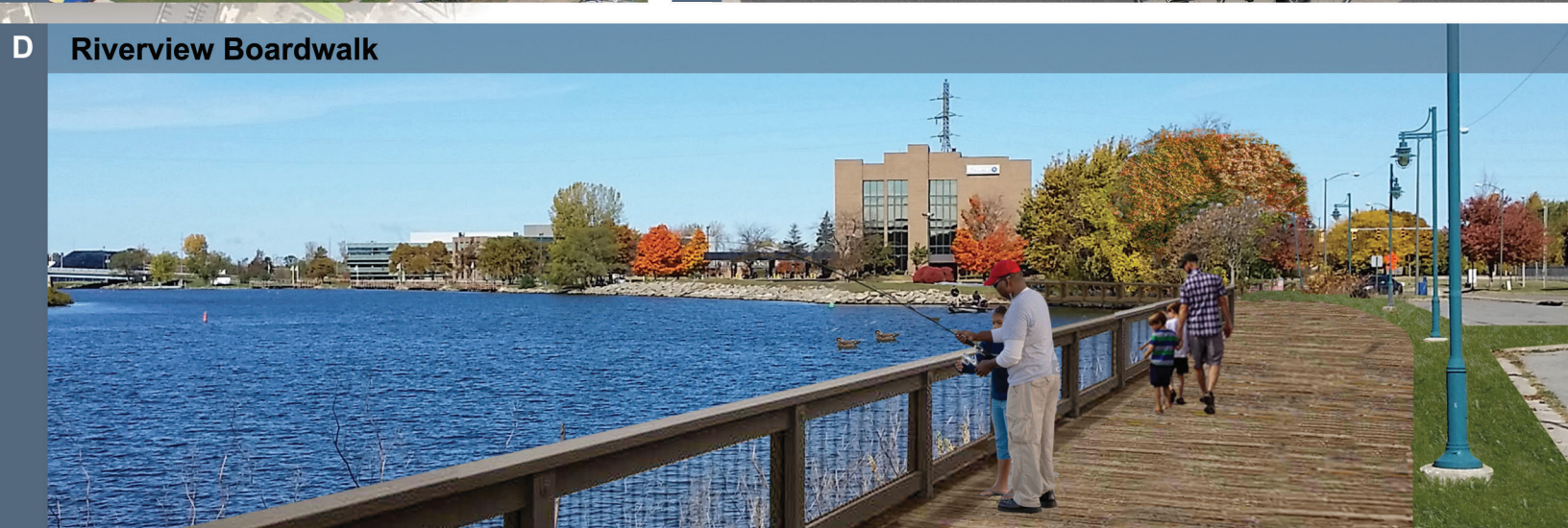
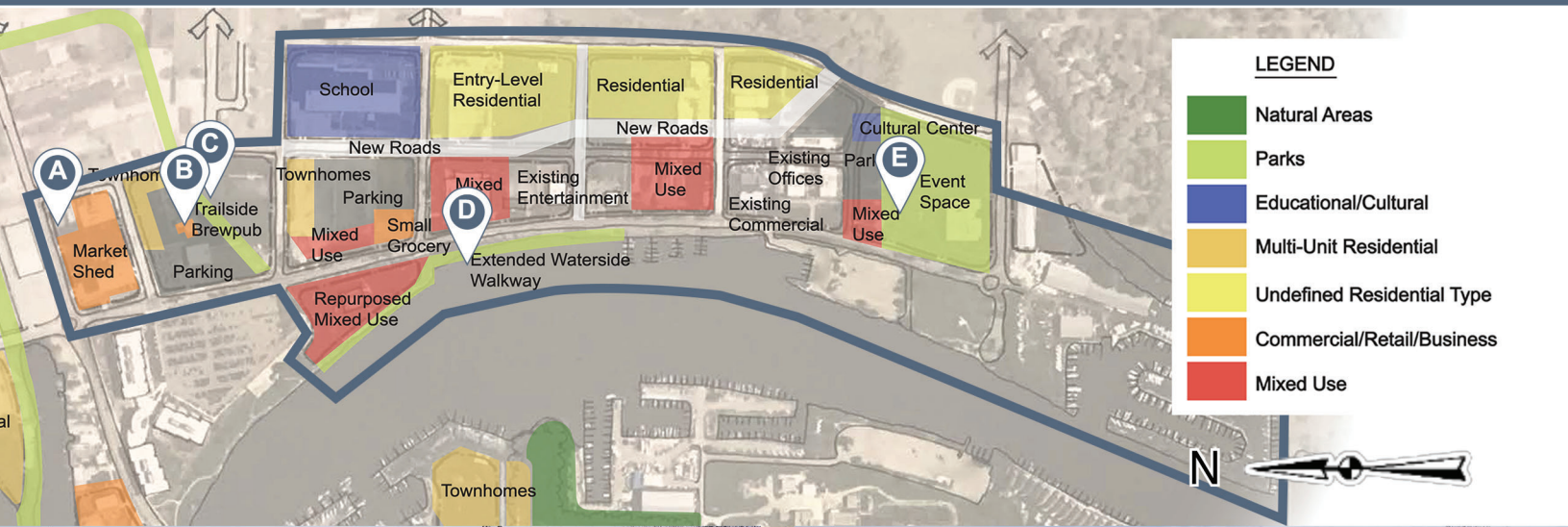
What is not in the current alternative that you would like to see included?

Over 100 individuals from the public chose to attend and had the opportunity to respond to the 2040 Vision. Individuals wrote their responses on color coded sticky notes (colors corresponded with questions), and then placed them on the 2040 Vision map on or near the location addressed in their response.

The following pages are organized by the five main regions within the Twin Cities Sustainable Harbors Project focus (Riverview Drive, Marina Island, Fisherman’s Wharf, Inner Harbor and Outer Harbor) and contain an overview of proposals within the 2040 Vision as well as a summary of the

RIVERVIEW DRIVE

Twin Cities Harbor Vision 2040



RIVERVIEW DRIVE

Twin Cities Harbor Vision 2040



Market Shed



PUBLIC INPUT KEY

- | | |
|--|---|
| ● Specific Element - most excited about; most likely to use | Region / Area - most excited about; most likely to use |
| ● Specific Element - uncomfortable; most likely to avoid. | Region / Area - uncomfortable; most likely to avoid |
| ● Specific Element - not included in current alternative but would like to see. | Region / Area - not included in current alternative but would like to see. |

PUBLIC INPUT

What would you be most excited about if it were a reality? What would you be most likely to use or visit?

- 1 Market Shed - Mentioned by 5 individuals
- 2 Event Space - Mentioned by 2 individuals
- 3 Cultural Center - Mentioned by 2 individuals
- 4 Existing Entertainment - Mentioned by 2 individuals
- 5 Grocery Store with affordable produce
- 6 Riverside walkway
- 7 Residential helps to build the tax base

What elements make you uncomfortable? What would you avoid if it was a reality?

- 8 Encourage current owner to rebuild or tear out existing marina

What is not in the current alternative that you would like to see included?

- 9 Boat docking
- 10 Extended walkway
- 11 What's happening? Needed road... chemical bank
- 12 Race course for amateur hydroplane races
- 13 Missing green space along Riverview Drive
- 14 [Cultural Center] Whose culture will be here? Black history does not exist in education
- 15 Move Riverview Drive
- 16 Parking for Event Space

Cultural Center & Event Space



Extended Walkway



MARINA ISLAND

Twin Cities Harbor Vision 2040



F Marina Island Townhomes



G Marina Island Natural Area (v1)

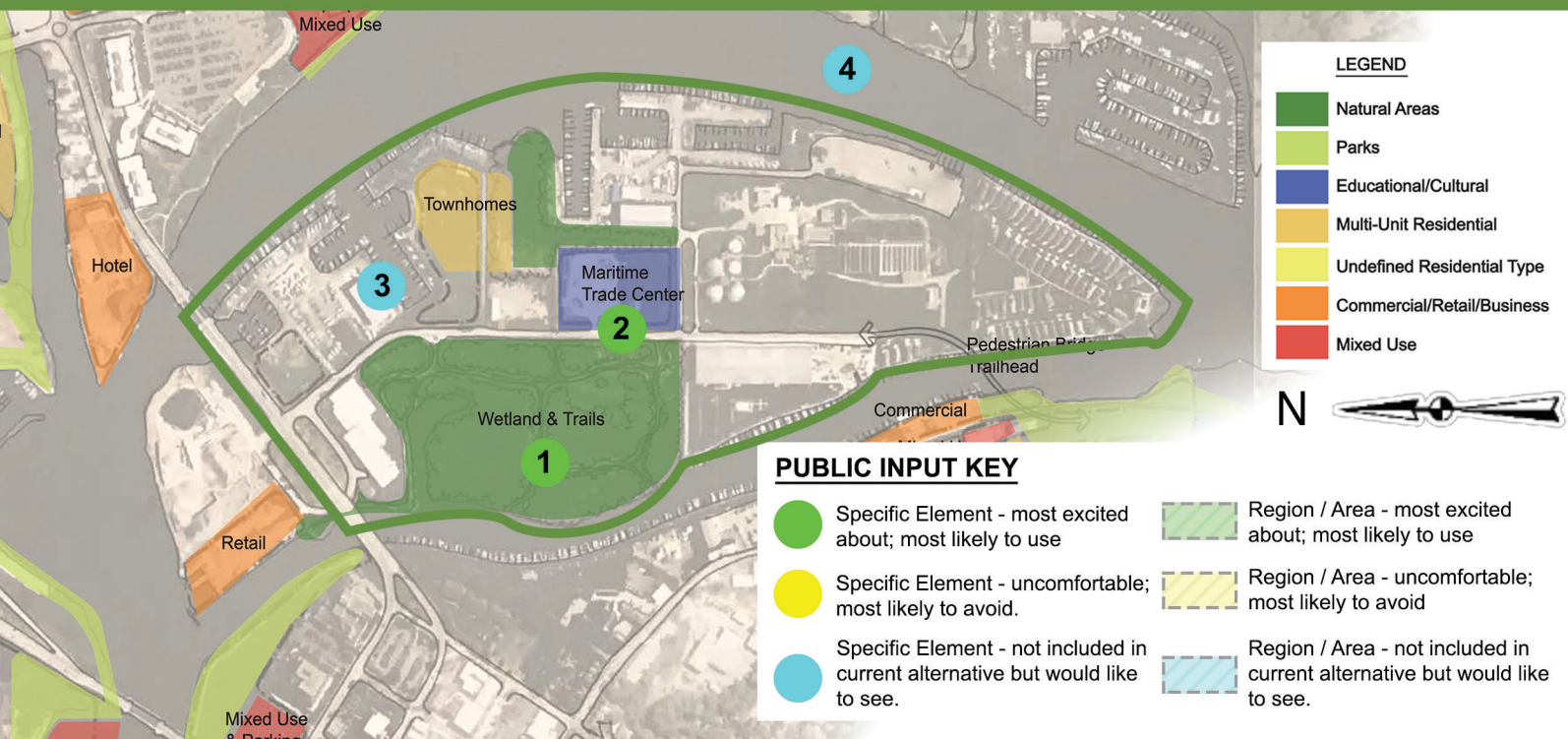


G Marina Island Natural Area (v2)



MARINA ISLAND

Twin Cities Harbor Vision 2040



PUBLIC INPUT

What would you be most excited about if it were a reality? What would you be most likely to use or visit?

- 1 Wetlands and tourism
- 2 Marine Trade Center

What elements make you uncomfortable? What would you avoid if it was a reality?

NO RESPONSES

What is not in the current alternative that you would like to see included?

- 3 Boat Slips
- 4 Trail across river on east side

Marina Island Natural Area



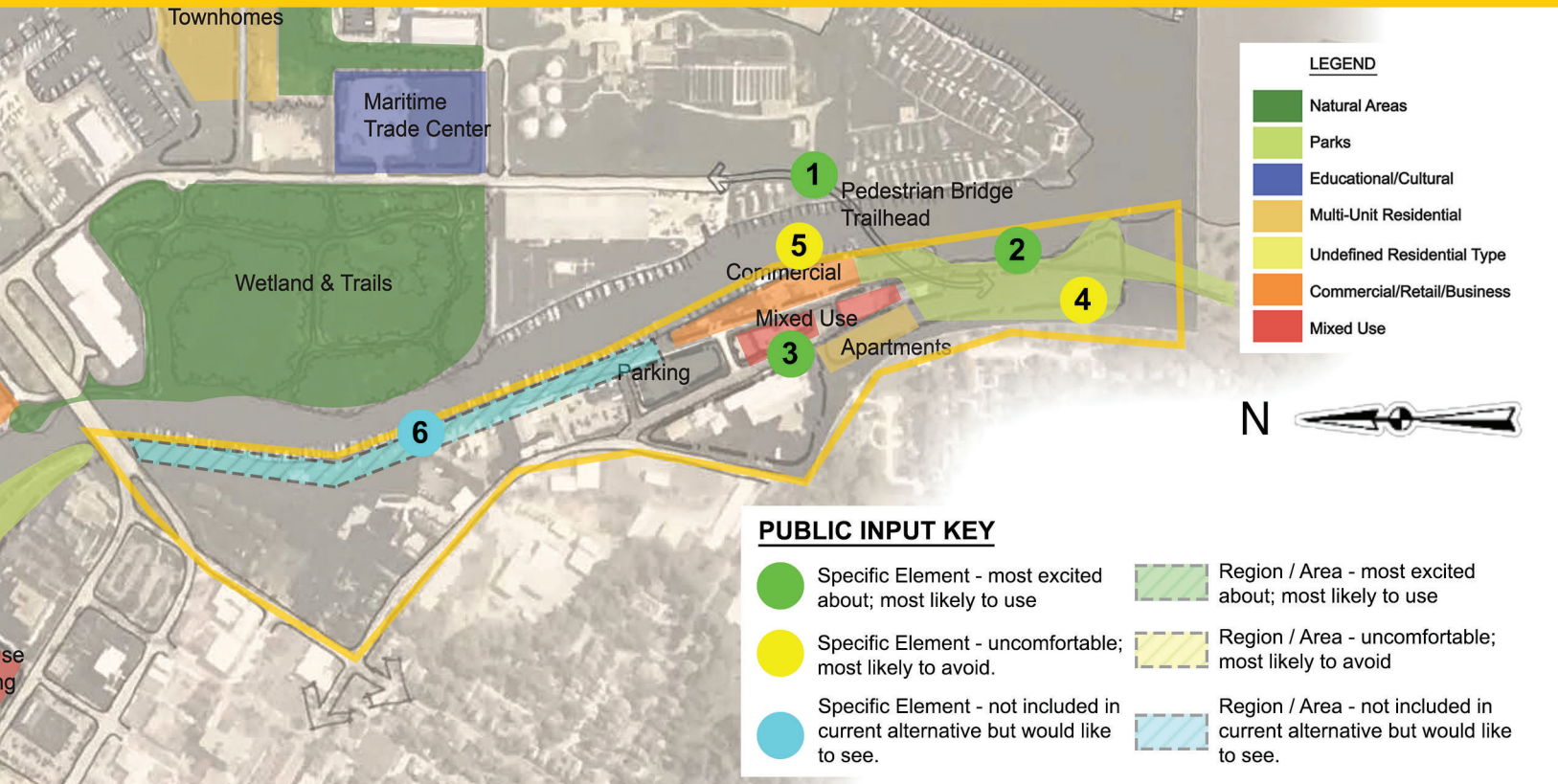
FISHERMAN'S WHARF

Twin Cities Harbor Vision 2040



FISHERMAN'S WHARF

Twin Cities Harbor Vision 2040



PUBLIC INPUT

What would you be most excited about if it were a reality? What would you be most likely to use or visit?

- 1 Pedestrian Bridge - two individuals mentioned
- 2 Bike trails along the old rail road tracks
- 3 Mixed Use

What elements make you uncomfortable? What would you avoid if it was a reality?

- 4 Green Space
- 5 Small Business Commercial

What is not in the current alternative that you would like to see included?

- 6 Trail from the Arboretum to the pedestrian Bridge

Pedestrian Bridge & Shops



INNER HARBOR

Twin Cities Harbor Vision 2040



K Seasonal Market & Marina



J St. Joe Parking & Structure

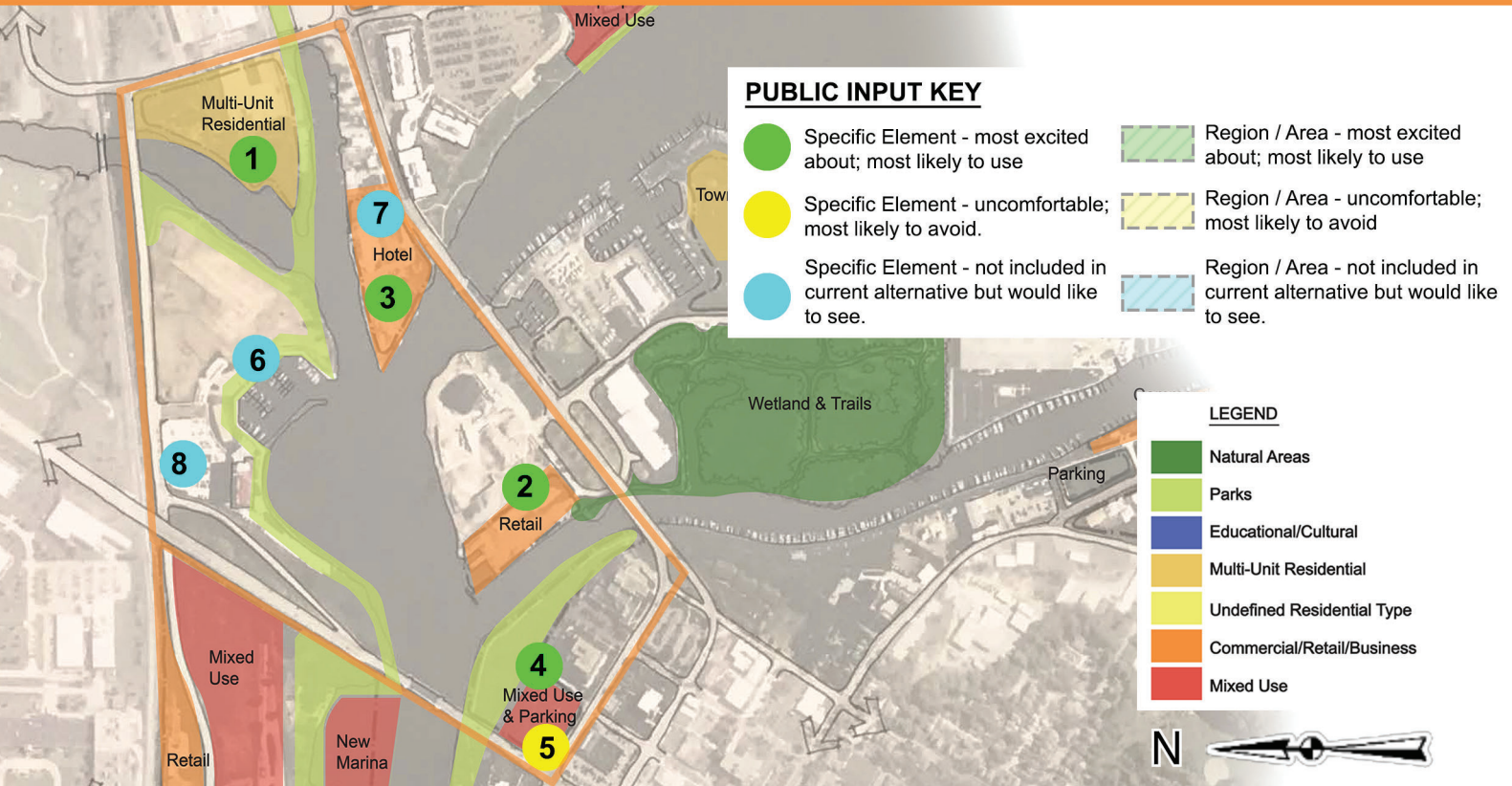


L Hotel



INNER HARBOR

Twin Cities Harbor Vision 2040



PUBLIC INPUT

What would you be most excited about if it were a reality? What would you be most likely to use or visit?

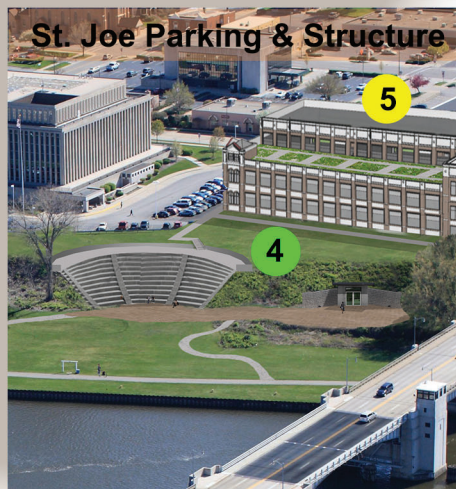
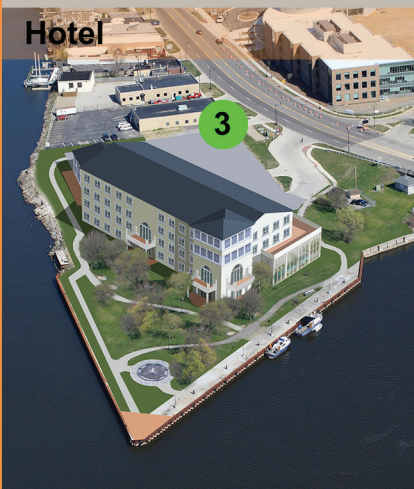
- 1 Multi-unit residential - mentioned by 2 individuals
- 2 Retail and food - mentioned by 2 individuals
- 3 Hotel
- 4 Mixed use and parking

What elements make you uncomfortable? What would you avoid if it was a reality?

- 5 Adding large parking complex next to the court house / jail helps cement the permanence of county buildings on prime riverfront realstate.

What is not in the current alternative that you would like to see included?

- 6 More information on why re-opening the harbor isn't being considered
- 7 Continued focus on narrowing streets and making more pedestrian friendly
- 8 Amtrak Whistle Stop to support hotels



OUTER HARBOR

Twin Cities Harbor Vision 2040

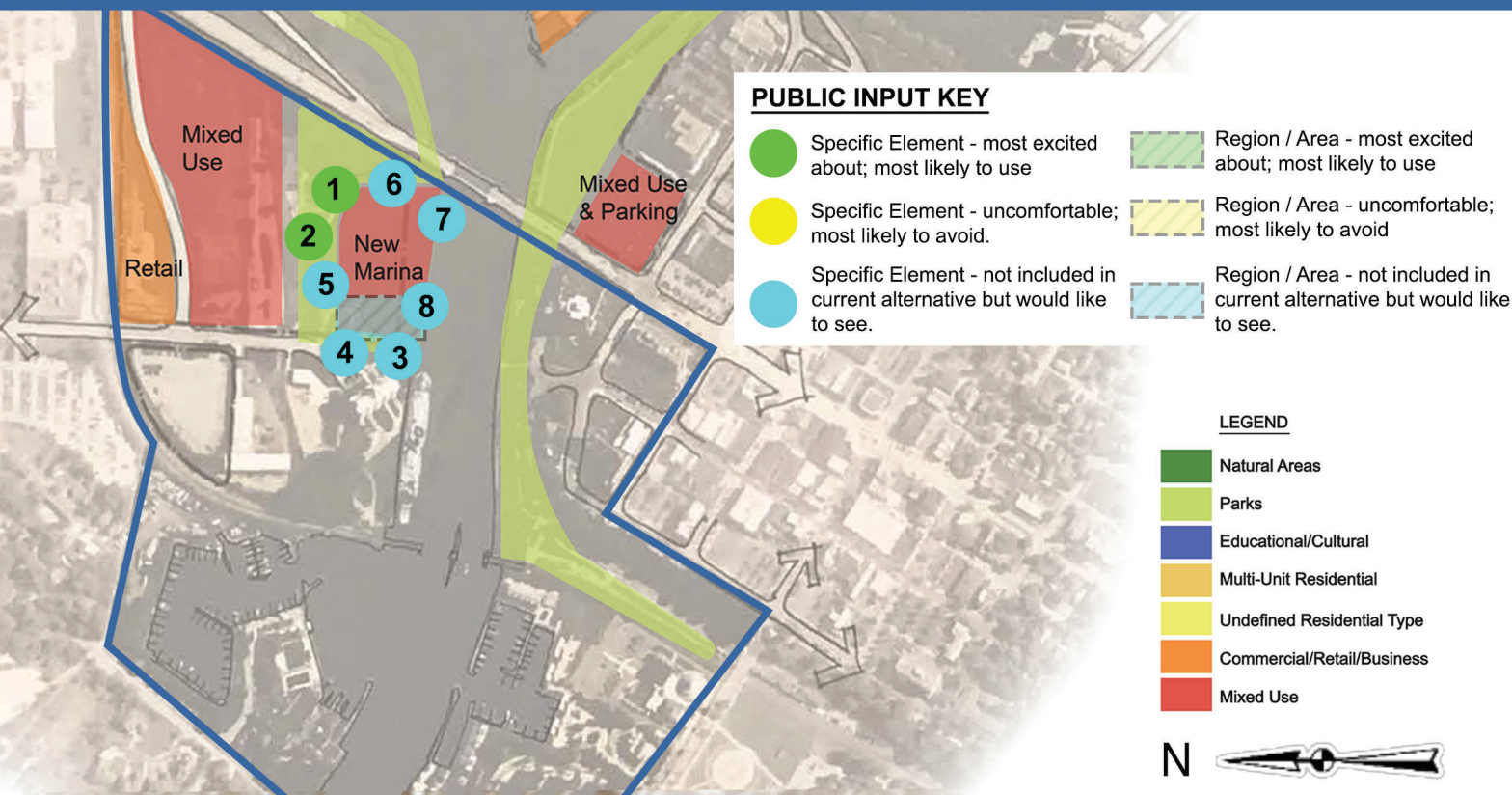


M New Marina & Mixed Use / Retail



OUTER HARBOR

Twin Cities Harbor Vision 2040



PUBLIC INPUT

What would you be most excited about if it were a reality? What would you be most likely to use or visit?

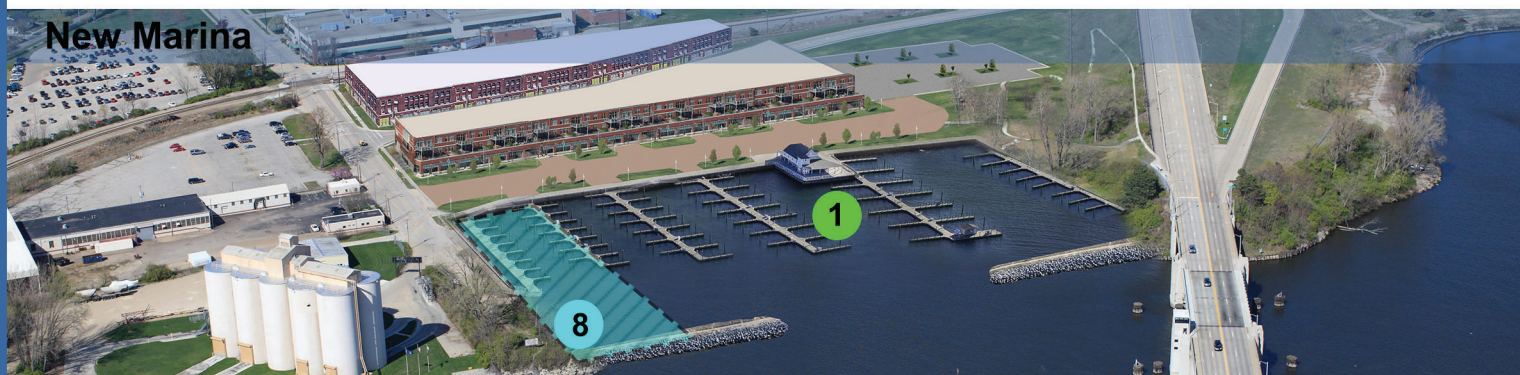
- 1 New Marina - mentioned by 4 individuals
- 2 Good for young sailors and family day sailing

What elements make you uncomfortable? What would you avoid if it was a reality?

NO RESPONSES

What is not in the current alternative that you would like to see included?

- 3 Missing a public launch
- 4 Kayak Launch
- 5 Non-motorized boat launch at old water tower
- 6 Dry sailing facility (supports regattas, lowers cost of sail boating, include jib crane, ramp launch)
- 7 More transient docks
- 8 Shipping docks / facility



All Responses

Element	Color	#	Region	Sub-Region	Notes
Pedestrian Bridge	Green	2	Fisherman's Wharf	Fisherman's Wharf	Trailhead to connect island
Bike Trails along the Old Rail Road tracks	Green	1	Fisherman's Wharf	Fisherman's Wharf	
Mixed Use	Green	1	Fisherman's Wharf	Fisherman's Wharf	Retail / Food
Trail from Arboretum to pedestrian bridge	Blue	1	Fisherman's Wharf	Fisherman's Wharf	
Green space S/B [small business] commercial	Yellow	1	Fisherman's Wharf	Fisherman's Wharf	
Walking and Bike Trails	Green	2	General	General	
Discussions with state regarding licensing so mixed use spaces are accessible to first-time business buyers	Green	1	General	General	
Improved Transportation and Connectivity	Green	1	General	General	
Jobs for Sustainability / Solar (See Buffalo, NY example! Thanks)	Green	1	General	General	
Eco Tourism Downtown	Green	1	General	General	
Mark jurisdiction on maps	Blue	1	General	General	
Coordinate with friends of Berrien County Trails	Blue	1	General	General	
Create more racial and socio-economic diversity in Benton Harbor	Blue	1	General	General	
Theater	Yellow	1	General	General	
Need early successes to build momentum	Yellow	1	General	General	
Timeline ~20 Years. Need quicker improvements	Yellow	1	General	General	
Multi-Unit Residential	Green	2	Inner Harbor	Inner Harbor North	
Retail and Food	Green	2	Inner Harbor	Inner Harbor Central	
Hotel	Green	1	Inner Harbor	Inner Harbor North	
Mixed Use & Parking	Green	1	Inner Harbor	Inner Harbor South	Priority
More Information on why reopening harbor isn't be considered	Blue	1	Inner Harbor	Inner Harbor North	
Continued focus / emphasis on narrowing streets / making them more pedestrian friendly	Blue	1	Inner Harbor	Inner Harbor North	
Amtrak Whistle Stop to support hotels	Blue	1	Inner Harbor	Inner Harbor North	
The will go away (unmarked lot)	Yellow	1	Inner Harbor	Inner Harbor Central	
Hotel II	Yellow	1	Inner Harbor	Inner Harbor Central	
Adding Large Parking complies next to the court house / jail helps cement the permanence of county buildings on prime riverfront realstate	Yellow	1	Inner Harbor	Inner Harbor South	
Wetlands and Tourism	Green	1	Marina Island	Marina Island West	
Marine Trade Center	Green	1	Marina Island	Marina Island West	
Trail Across river on the east side	Blue	1	Marina Island	Marina Island East	
Boat Slips	Blue	1	Marina Island	Marina Island East	
New Marina	Green	4	Outer Harbor	Outer Harbor North	
Good for young sailors and family day sailing	Green	1	Outer Harbor	Outer Harbor North	
Missing Public Launch	Blue	1	Outer Harbor	Outer Harbor North	
Non-motorized boat launch at old water tower	Blue	1	Outer Harbor	Outer Harbor North	
Kayak Launch	Blue	1	Outer Harbor	Outer Harbor North	
New Marina Elements	Blue	1	Outer Harbor	Outer Harbor North	Dry sailing facility (once design - supports regattas, lowers cost of sail boating, include jib crane, ramp launch)
More Transient Docks	Blue	1	Outer Harbor	Outer Harbor North	
Shipping Docks / Facility	Blue	1	Outer Harbor	Outer Harbor North	
Market Shed	Green	5	Riverview Drive	Riverview Drive North	
Event Space	Green	2	Riverview Drive	Riverview Drive South	
Cultural Center	Green	2	Riverview Drive	Riverview Drive South	
Existing Entertainment	Green	2	Riverview Drive	Riverview Drive Central	
Grocery Store	Green	1	Riverview Drive	Riverview Drive Central	Affordable Produce
Riverside Walkways	Green	1	Riverview Drive	Riverview Drive Central	
Residential	Green	1	Riverview Drive	Riverview Drive Central	Residential helps to build the tax base
Boat Docking Along Riverview Drive	Blue	1	Riverview Drive	Riverview Drive Central	
Extended Walkway	Blue	1	Riverview Drive	Riverview Drive Central	Green space with live shoreline
What's Happening? Needed road... chemical bank	Blue	1	Riverview Drive	Riverview Drive Central	
Race Course for scheduled amateur hydroplane races	Blue	1	Riverview Drive	Riverview Drive South	
Missing Green space along all of Riverview Drive	Blue	1	Riverview Drive	Riverview Drive South	
Cultural Center	Blue	1	Riverview Drive	Riverview Drive South	Whose culture will be here? Black history does not exist in education;
Move Riverview Drive	Blue	1	Riverview Drive	Riverview Drive South	
Parking for event space?	Blue	1	Riverview Drive	Riverview Drive South	
Encourage Current Owner to rebuild or tear out existing marina	Yellow	1	Riverview Drive	Riverview Drive Central	

All Green

Element	Color	#	Region	Sub-Region	Notes
Market Shed	Green	5	Riverview Drive	Riverview Drive North	
New Marina	Green	4	Outer Harbor	Outer Harbor North	
Pedestrian Bridge	Green	2	Fisherman's Wharf	Fisherman's Wharf	Trailhead to connect island
Walking and Bike Trails	Green	2	General	General	
Multi-Unit Residential	Green	2	Inner Harbor	Inner Harbor North	
Event Space	Green	2	Riverview Drive	Riverview Drive South	
Cultural Center	Green	2	Riverview Drive	Riverview Drive South	
Existing Entertainment	Green	2	Riverview Drive	Riverview Driver Central	
Bike Trails along the Old Rail Road tracks	Green	1	Fisherman's Wharf	Fisherman's Wharf	
Mixed Use	Green	1	Fisherman's Wharf	Fisherman's Wharf	Retail / Food;
Discussions with state regarding licensing so mixed use spaces are accessible to first-time business buyers	Green	1	General	General	
Improved Transportation and Connectivity	Green	1	General	General	
Jobs for Sustainability / Solar (See Buffalo, NY example! Thanks)	Green	1	General	General	
Eco Tourism Downtown	Green	1	General	General	
Retail and Food	Green	2	Inner Harbor	Inner Harbor Central	
Hotel	Green	1	Inner Harbor	Inner Harbor North	
Mixed Use & Parking	Green	1	Inner Harbor	Inner Harbor South	Priority
Wetlands and Tourism	Green	1	Marina Island	Marina Island West	
Marine Trade Center	Green	1	Marina Island	Marina Island West	
Good for young sailors and family day sailing	Green	1	Outer Harbor	Outer Harbor North	
Grocery Store	Green	1	Riverview Drive	Riverview Drive Central	Affordable Produce
Riverside Walkways	Green	1	Riverview Drive	Riverview Drive Central	
Residential	Green	1	Riverview Drive	Riverview Drive Central	Residential helps to build the tax base

All Yellow

Element	Color	#	Region	Sub-Region	Notes
Green space S/B [small business] commercial	Yellow	1	Fisherman's Wharf	Fisherman's Wharf	
Theater	Yellow	1	General	General	
Need early successes to build momentum	Yellow	1	General	General	
Timeline ~20 Years. Need quicker improvements	Yellow	1	General	General	
The will go away (unmarked lot)	Yellow	1	Inner Harbor	Inner Harbor Central	
Hotel II	Yellow	1	Inner Harbor	Inner Harbor Central	
Adding Large Parking complies next to the court house / jail helps cement the permanence of county buildings on prime riverfront realstate	Yellow	1	Inner Harbor	Inner Harbor South	
Encourage Current Owner to rebuild or tear out existing marina	Yellow	1	Riverview Drive	Riverview Drive Central	

All Blue

Element	Color	#	Region	Sub-Region	Notes
Trail from Arboretum to pedestrian bridge	Blue	1	Fisherman's Wharf	Fisherman's Wharf	
Mark jurisdiction on maps	Blue	1	General	General	
Coordinate with friends of Berrien County Trails	Blue	1	General	General	
Create more racial and socio-economic diversity in Benton Harbor	Blue	1	General	General	
More Information on why reopening harbor isn't be considered	Blue	1	Inner Harbor	Inner Harbor North	
Continued focus / emphasis on narrowing streets / making them more pedestrian friendly	Blue	1	Inner Harbor	Inner Harbor North	
Amtrak Whistle Stop to support hotels	Blue	1	Inner Harbor	Inner Harbor North	
Trail Across river on the east side	Blue	1	Marina Island	Marina Island East	
Boat Slips	Blue	1	Marina Island	Marina Island East	
Missing Public Launch	Blue	1	Outer Harbor	Outer Harbor North	
Non-motorized boat launch at old water tower	Blue	1	Outer Harbor	Outer Harbor North	
Kayak Launch	Blue	1	Outer Harbor	Outer Harbor North	
New Marina Elements	Blue	1	Outer Harbor	Outer Harbor North	Dry sailing facility (once design - supports regattas, lowers cost of sail boating, include jib crane, ramp launch)
Shipping Docks / Facility	Blue	1	Outer Harbor	Outer Harbor North	
More Transient Docks	Blue	1	Outer Harbor	Outer Harbor North	
Boat Docking Along Riverview Drive	Blue	1	Riverview Drive	Riverview Drive Central	
Extended Walkway	Blue	1	Riverview Drive	Riverview Drive Central	Green space with live shoreline
What's Happening? Needed road... chemical bank	Blue	1	Riverview Drive	Riverview Drive Central	
Race Course for scheduled amateur hydroplane races	Blue	1	Riverview Drive	Riverview Drive South	
Missing Green space along all of Riverview Drive	Blue	1	Riverview Drive	Riverview Drive South	
Cultural Center	Blue	1	Riverview Drive	Riverview Drive South	Whose culture will be here? Black history does not exist in education;
Move Riverview Drive	Blue	1	Riverview Drive	Riverview Drive South	
Parking for event space?	Blue	1	Riverview Drive	Riverview Drive South	